



NewBridge Services

IMPACT 2014



Meet the People We Help

newbridge.org

2015 Board of Trustees

Anne Wolfe
President

Betty Cass-Schmidt
Vice President

Francis McEnerney
Treasurer

Marie Episale
Secretary

Robert L. Parker
CEO

Mary Ameen
Nancy Grimbilas
Suzanne Herrmann
Bonnie Holmes

Tom Kemly
Andrew Mainardi, III
Rich Paliwoda
George Sous

Emeritus
Jeffrey Gillman
Sharon Hollick

SNAPSHOT

For a nonprofit to serve effectively, it must:

- Be financially secure
- Employ a caring staff that stays on top of developments in their field
- Keep its finger on the pulse of shifting community needs

With your support, NewBridge has **exceeded those standards**; our reputation as a leading service provider and voice for people with mental illness and other special needs continues to grow.

NewBridge's 225 professionals:

- Treat mental illnesses and addictions
- Teach skills for coping with stress, grief and challenging relationships
- Provide affordable and supportive housing, especially for people with special needs
- Teach children and teens resiliency skills for healthy emotional development

- Help young adults earn their New Jersey high school diplomas and secure a career path
- Support seniors so they can live as independently as possible
- Provide psychological first aid when crises strike

The more than 5,000 children and teens in our in-school prevention programs make up the largest group that NewBridge serves. They learn, among other things, how to:

- Deal with bullies
- Stand up to peer pressure
- Recognize suicidal thoughts in themselves and friends

Clients in addiction and mental health counseling, day treatment programs for serious mental illness, supportive housing, and our in-home medical and counseling services for seniors require more intensive help. Many of them receive two or more services.

"I feel a lot of people don't talk about mental health, so I wanted to bring attention to it," wrote Jalyn, who received support from NewBridge counselors when she was going through a tough time. "I hope you can use this donation to continue to help others."

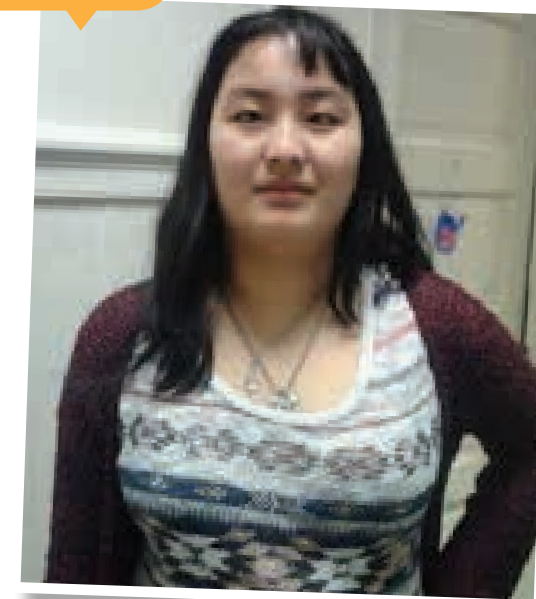
NewBridge will. Thanks Jalyn.

BRINGING BALANCE

Thanks to your generosity, NewBridge in 2014 succeeded in our mission of bringing balance to people's lives through counseling, education and housing. Together we helped more than 8,500 children, adults and seniors in our communities through 20-plus programs and built stronger communities.

We're honored to have served so many people, but numbers don't reflect the profound impact your support has made. That's why we're pleased to share with you the experiences of individuals whose lives have improved because of your commitment to NewBridge.

How humbled we were to receive a letter in May from then-high school senior Jalyn Lovejoy, pictured, who thanked NewBridge by raising \$750 selling rainbow loom bracelets during Mental Health Awareness Month. Jalyn is now a freshman at Centenary College of New Jersey.



COUNSELING

- 55 more children and adults are getting their lives on track because we expanded both our Child and Family Services and Adult and Family Services programs in Sussex County.
- We received state approval to prescribe psychiatric medications in Sussex County, where there is a shortage of providers.
- 50 more seniors are receiving in-home counseling with the growth of our NewBridge@Home program in Morris County.
- We opened a state-of-the-art service center in Passaic County, allowing us to better accommodate our clients with special needs.

Marianne Williams, pictured with NewBridge SAIL Director Claudia Mattson, first turned to NewBridge in 2009, afraid that upheaval in her life would start her drinking again after 20 years of sobriety. Marianne joined a support group for adults led by a NewBridge counselor and has remained sober.

The 73-year-old grandmother also has Parkinson's disease, rheumatoid arthritis and other medical issues that make living alone difficult. Through the NewBridge@Home program, Marianne receives in-home counseling and checkups by a NewBridge advanced practice nurse.



"If it weren't for NewBridge, I don't know how I'd survive trying to manage all these issues," said Marianne, who lives in senior housing in Butler.

"School has always been a struggle for me, but the teachers at NewBridge taught in a different way and I learned quickly, Pedro said. "I think attending NewBridge Jobs Plus is the best decision I've made so far in my life."



Another 47 young adults who struggled in traditional high school earned their New Jersey High School diplomas through NewBridge Jobs Plus, an alternative education program that gives young adults the attention they need to succeed. The Class of 2014 joins well over 3,000 alumni who earned degrees and prepared for satisfying careers.

Pedro Castillo, pictured, dropped out of high school because he felt the school had given up on him. His future looked bleak until a friend urged him to give NewBridge Jobs Plus a try.

The 18-year-old Dover resident is now enrolled at the County College of Morris pursuing a career in physical fitness training.

"It's so peaceful. I can go out without worrying that someone is going to hurt me or any of my kids," Irma said. "If it weren't for NewBridge, I would still be living in that hellhole."



HOUSING

NewBridge created 17 units of affordable housing in 2014, bringing to 92 the total it owns and operates for people with special needs and others. NewBridge provides a continuum of housing options, from group homes with round-the-clock supervision to apartments, to allow people to live as independently as possible. In total, NewBridge provides housing for more than 200 people annually.

Irma Hamid, pictured, and her three children lived in a tiny one-bedroom apartment in a Paterson neighborhood where drug dealing and shootings were commonplace. "It was like being in a cage," recalled Irma, who lives with depression, asthma and high blood pressure.

Irma's life improved dramatically in 2008 when she and her children moved into NewBridge's Clifton Family Housing, a residence for families in which a parent has a mental illness.

CAPITAL CAMPAIGN

The Helping NewBridge Move Forward Capital Campaign **EXCEEDED OUR \$2 MILLION GOAL.**

The funds have allowed us to:

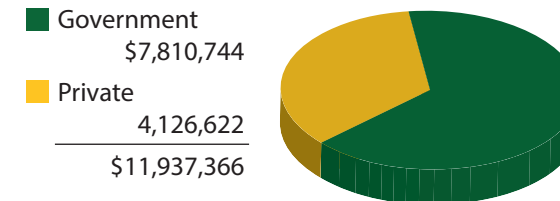
- Modernize our IT system, switching to electronic health records needed in today's world of healthcare
- Protect clients of our residences from power outages by installing new generators
- Provide young adults transportation to NewBridge Jobs Plus, our successful alternative education program
- Secure funding to build six units of special needs affordable housing in Parsippany and six more apartments at our Clifton Family Housing.

We thank the following campaign donors for their investment in the future of NewBridge:

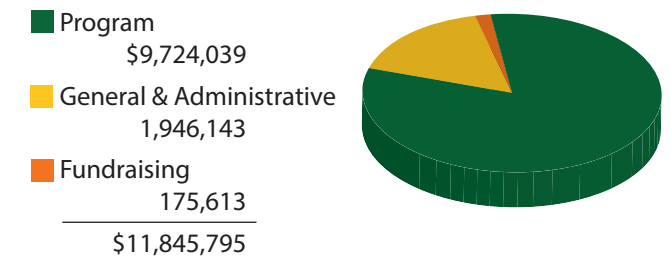
Mary & Ramsey Ameen
Anonymous (3)
Baruka Family
Robert Collins Fund
Columbia Bank
Kathleen & William Eckert
Marie Episale
Sharon & Paul Hollick
Hyde and Watson Foundation
F.M. Kirby Foundation
Allen Levy & Amy Greenberg
PM Family Foundation
Priscilla & Andrew Mainardi, III
Morris County Division of Community Development
Pam Palumbo & Elizabeth Hall
Robert L. Parker & Jorge A. Marques
PSE&G
George & Janet Sous
TD Bank Charitable Foundation
United Way of Northern New Jersey
Adva & Robert Volle
Isobel Wayrick
Wyndham Worldwide

FINANCIALS

FY 2014 Revenue

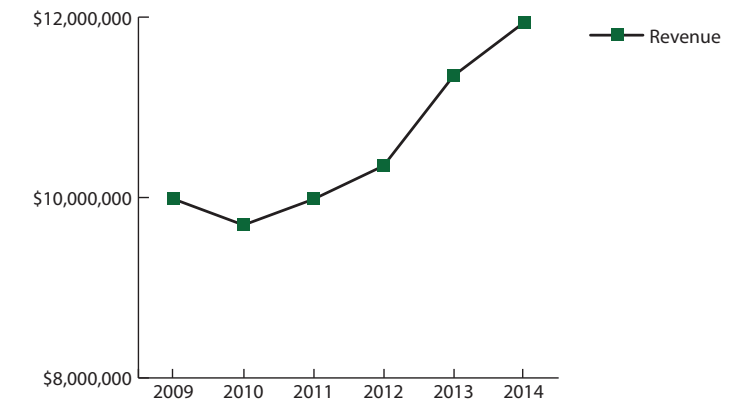


FY 2014 Expenses (before depreciation)



Growing Revenue

Revenue has grown by 20% over the past five years, allowing us to add services needed by our communities.



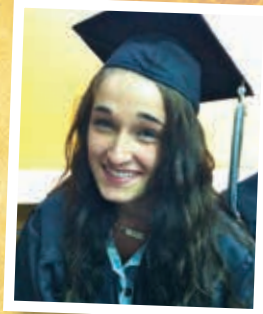
We thank you for your generosity and ask that you continue to support our efforts in 2015. If NewBridge has touched your life, we invite you to explore ways you can get more involved, from volunteer opportunities to monthly giving or joining the NewBridge Legacy Society. Visit newbridge.org/donate to learn more.

NewBridge believes in the power of partnerships – with other nonprofits, towns and cities, state agencies, and

most importantly, with you, our supporters. Working together, we are impacting people's lives, building their confidence, lifting them out of darkness, and inspiring them to give back where they can. **Making connections by helping others gives our lives meaning and fills our hearts.** From the bottom of ours, thank you.

MAKING CONNECTIONS

by helping others gives our lives meaning and fills our hearts.



Bringing Balance
to People's Lives



7 Industrial Road
Pequannock, NJ 07440
973.839.2520 • 888.746.9333
newbridge.org